

SHREWSBURY INTERNATIONAL SCHOOL

HONG KONG

Policy Title:	Structure of Governance
Policy Section:	B: Governance, Leadership and Ownership
Publish to:	Website Parent Portal Staff Portal Policy Compendium

Introduction

Shrewsbury International School Hong Kong is registered under Section 13 of the Education Ordinance (Cap. 279) and as a not-for-profit organisation under Section 88 of the Inland Revenue Ordinance.

It enjoys a structure of governance that has been designed to provide an appropriate level of local autonomy and ready access to a broad range of advice, knowledge and experience.

The Shrewsbury Family of Schools

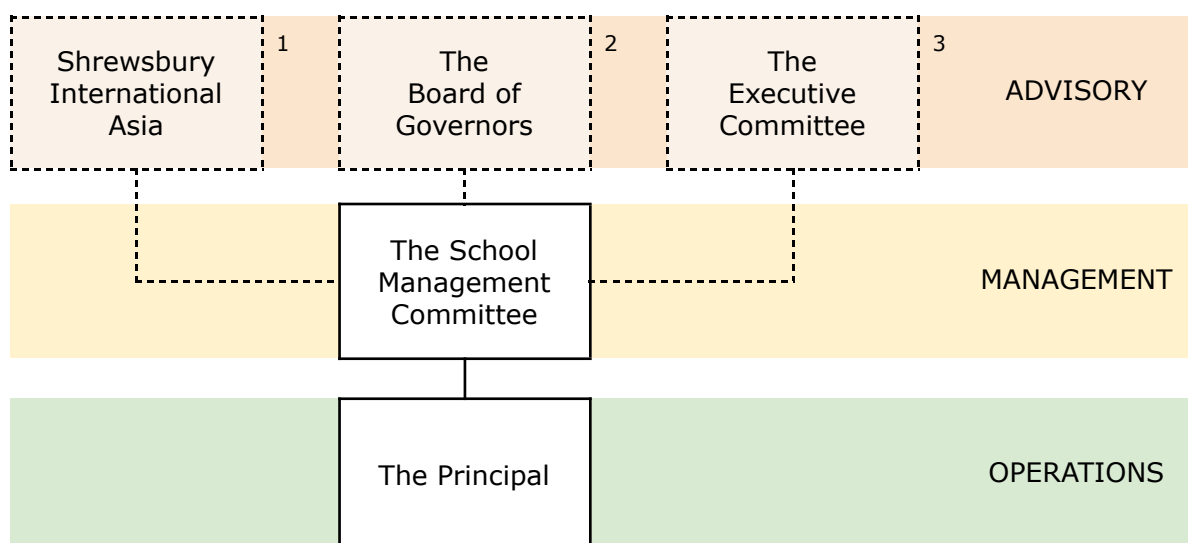
Shrewsbury International School Hong Kong benefits from a close relationship with its illustrious sibling thanks to the relationship it shares with Shrewsbury International Asia, a company established in 2018 to support the setup and operation of schools in Bangkok, Hong Kong and Nansha bearing the Shrewsbury Name.

School Governance

The School Management Committee (SMC) is responsible for the overall management of Shrewsbury International School Hong Kong, to include the direction of The Principal and:

- Finance and budgeting;
- Collection of fees;
- Enrollment and admissions;
- Health and safety;
- Child protection and safeguarding;
- Staffing and headcount.

The SMC are also responsible for ensuring that The School operates in full compliance with the Education Ordinance. It reports directly to the School Sponsoring Body (Shrewsbury International School Hong Kong Ltd) and draws upon three key advisory groups:



1. Shrewsbury International Asia provides a range of advice, including that connected to:
 - 1.1. Strategy;
 - 1.2. Policy;
 - 1.3. Principals' training and performance management;
 - 1.4. Operational management;

1.5. Financial matters.

The Director of Schools and Chief Financial Officer of Shrewsbury International Asia attend meetings with The Board of Governors, as ex-officio members, and the Executive Committee.

2. The Board of Governors is independently chaired. It contains local and international members, including two from Shrewsbury School in the UK and formal representation from The School in Hong Kong. Operating in accordance with the Rules of The Board of Governors (B5), it meets on a termly basis and provides advice according to an agreed framework.
3. The Executive Committee supports the safe and agile operation of The School. It meets on a monthly basis and acts to advise the School Management Committee on a full range of operational and managerial items.