

# SHREWSBURY INTERNATIONAL SCHOOL

HONG KONG

Policy Title:	Structure of Governance
Policy Section:	B: Governance, Leadership and Ownership
Publish to:	Website Parent Portal Staff Portal Policy Compendium

## **Introduction**

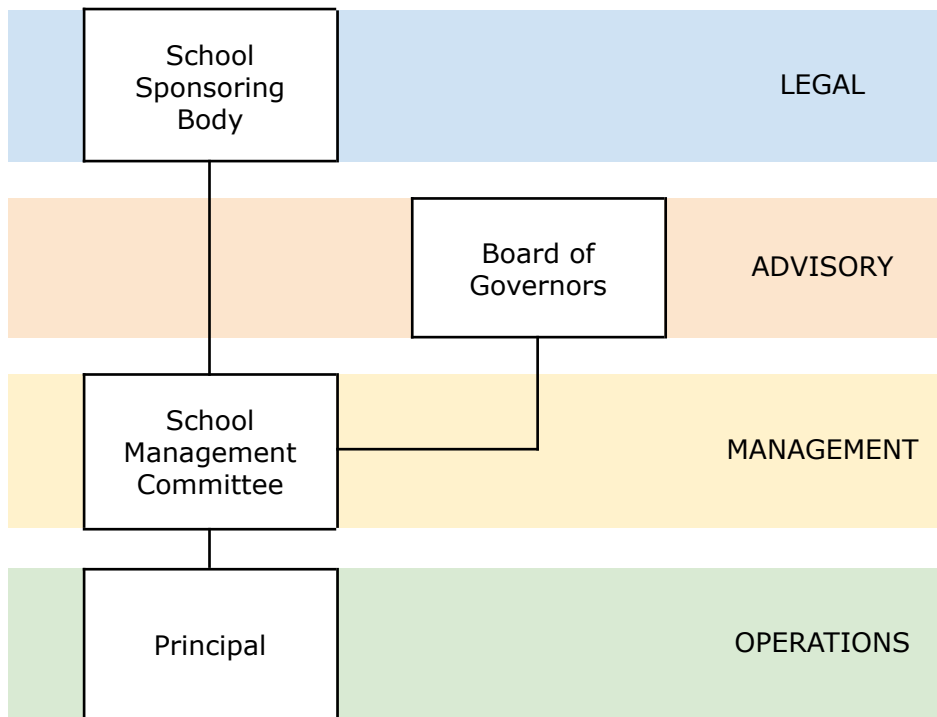
Shrewsbury International School Hong Kong highlights Reflection and Renewal as a core value within Guiding Statements that also describe a commitment to 'evaluation, improvement and growth'. Registered under Section 13 of the Education Ordinance (Cap. 279) and as a not-for-profit organisation under Section 88 of the Inland Revenue Ordinance, it enjoys a structure of governance that has been designed to provide an appropriate level of local autonomy and ready access to a broad range of advice, knowledge and experience.

## **The Shrewsbury Family of Schools**

Shrewsbury International School Hong Kong benefits from a close relationship with its illustrious sibling thanks to the relationship it shares with Shrewsbury International Asia, established in 2018 to support the setup and operation of schools in Bangkok and Hong Kong bearing the Shrewsbury Name.

## **School Governance**

The School Sponsoring Body (SSB) is legally responsible for Shrewsbury International School Hong Kong and the appointment of a School Management Committee (SMC). The SMC is responsible for ensuring that the School operates in full compliance with the Education Ordinance - it acts to both appoint and manage the school Principal, who then takes charge of the school operation.



The Board of Governors comprises local and international members, including two from Shrewsbury School in the UK and formal representation from the School in Hong Kong. Operating in accordance with the Rules of the Board of Governors (B5), it meets on a termly basis and provides advice according to an agreed framework.